

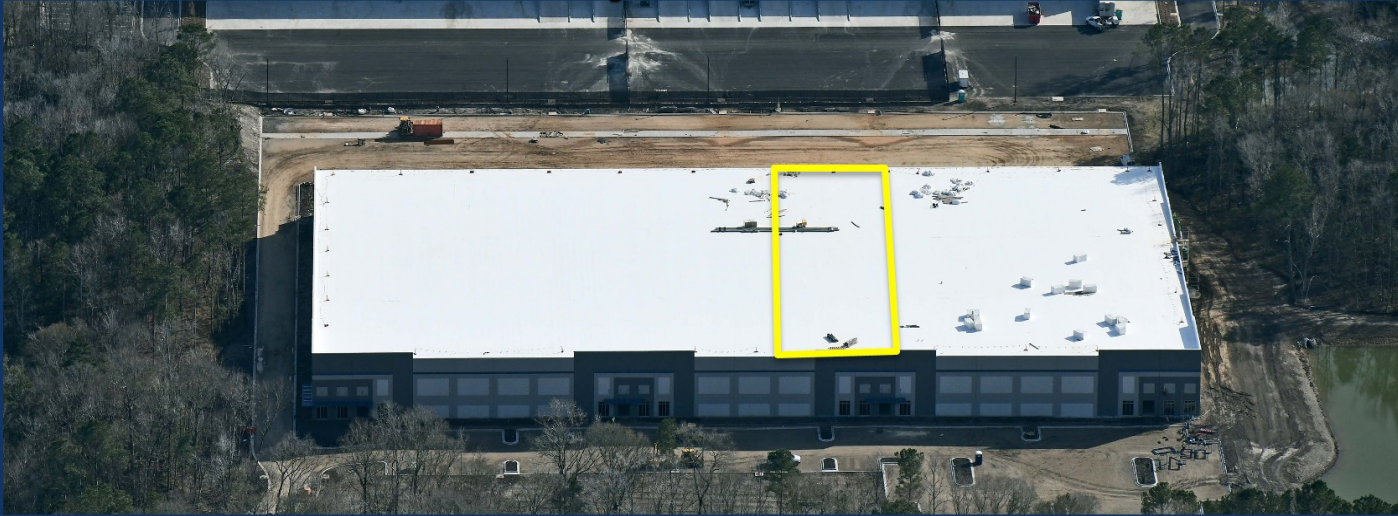
CROSSPOINT

AT PALMETTO COMMERCE PARK

BUILDING 10 – AVAILABLE

31,000 SF of Class “A” Industrial For Lease

Palmetto Commerce Parkway - North Charleston - South Carolina



For Information and Site Tours:

Michael G. White, SIOR, CCIM
Broker-in-Charge
843.819.1234

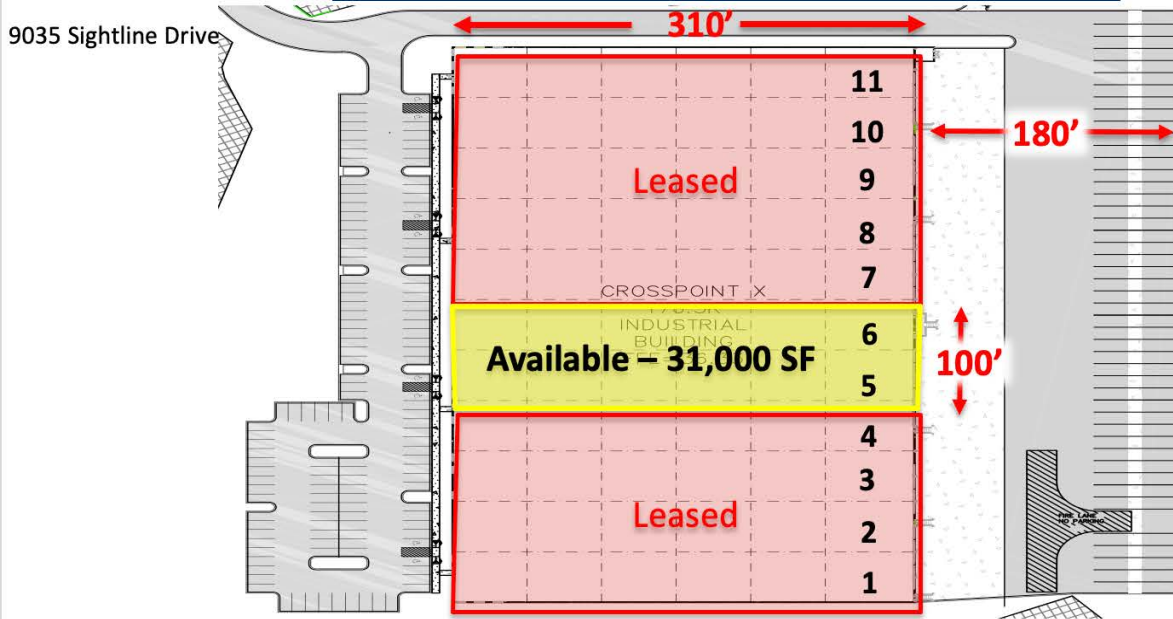
Mike.White@CharlestonIndustrial.com

CK Childress
Klein

CHARLESTON INDUSTRIAL

Visit Crosspoint online at
www.CrosspointCharleston.com

Crosspoint Building #10 Floor Plan



CROSSPOINT BUILDING #10:

- **31,000 SF – Immediately Available**
- **24 trailer parking spaces**
- **24 auto parking spaces**
- **6 dock doors**
- **Offices will be built-to-suit**
- **LED lighting**
- **Ability to add one concrete ramp**
- **Opportunity to grow with other Crosspoint buildings within our 335 acres campus**
- **Total Building Size - 170,500 SF**
- **30' clear height below joist**
- **Rear-loading warehouse facility**
- **Bay Spacing - 50' x 50'**
with a 60'-deep loading bay
- **Each Bay totals 15,500 SF**
- **277/480-volt, 3-phase electrical**
- **ESFR Fire Sprinkler System**
- **Concrete Tilt-Wall Construction**

For Information and Site Tours:

Michael G. White, SIOR, CCIM
 Broker-in-Charge
 843.819.1234

Mike.White@CharlestonIndustrial.com

CHARLESTON INDUSTRIAL

Visit Crosspoint online at
www.CrosspointCharleston.com

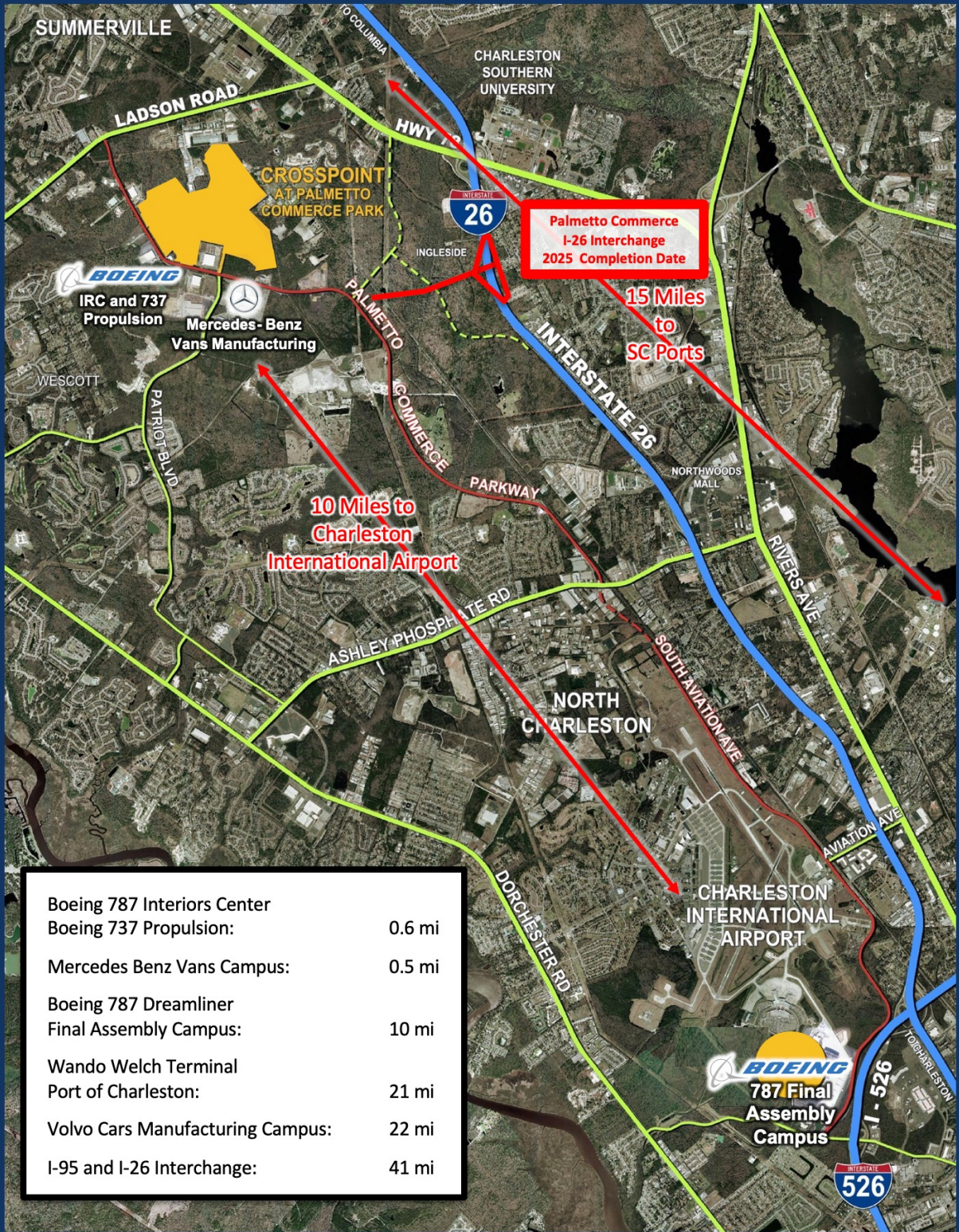
CROSSPOINT

AT PALMETTO COMMERCE PARK



CROSSPOINT

AT PALMETTO COMMERCE PARK



For Information and Site Tours:

Michael G. White, SIOR, CCIM
Broker-in-Charge
843.819.1234

Mike.White@CharlestonIndustrial.com

CHARLESTON INDUSTRIAL

Visit Crosspoint online at
www.CrosspointCharleston.com

CK Childress Klein